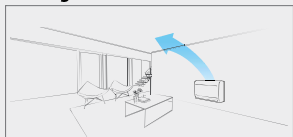


CONSOLE

Installation Support Clip

During the cooling operation, the vane adjusts upwards to direct the air flow towards the ceiling.
When heating, the vane directs the warm air downwards to balance the room temperature especially for floor.

Cooling



Heating (Normal)



Heating (Floor Heating Mode)



Quick Floor Heating

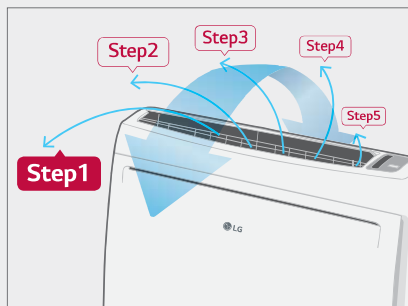
Console air conditioners offer a fast and powerful performance. Using the floor heating mode, console air conditioners provide faster floor heating and help to reach the desired temperature quickly.

	Company A	Electric Heater	LG	LG Floor Heating Mode
27°C				
15°C				
Lead Time for Heating (13°C - 21°C)	12 minutes 30 seconds	50 minutes	9 minutes 30 seconds	8 minutes 40 seconds

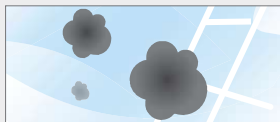
(Test Condition : Target Temp 23°C, Indoor Room : 13°C, Outdoor Room : 7°C)

5-Step Vane Control

There are 5 different stages to control air flow direction.



Healthier Air (3 Stage Air Filter System)



1st Advanced pre filter :

The antibacterial pre-filter primarily reduces large dust particles, mould and quilt dust.



2nd Allergy Filter :

Filter consists of enzyme that breaks down allergens, apatite and organic / inorganic binders. When the air passes through the filter, allergens cling to the filter, and the filter deactivates the allergens.



3rd Plasma Ion Generator :

The sterilised ion generator emits around 1.2 million ions, and traps some of the airborne hazardous substances.

CONSOLE

ARNU07GQAA4 / ARNU09GQAA4
ARNU12GQAA4 / ARNU15GQAA4



Model	Independent Unit		ARNU07G A4	ARNU09G A4	ARNU12G A4	ARNU15G A4		
Capacity	Cooling	Nom	kW	2.2	2.8	3.6	4.5	
	Heating	Nom	kW	2.5	3.2	4.0	5.0	
Power Input	Cooling / Heating	Nom ¹⁾	W	15	15	18	24	
	Cooling / Heating	Rated ²⁾	W	30	30	30	30	
Power Supply			Ø / V / Hz	1 / 220-240 / 50 1 / 220 / 60	1 / 220-240 / 50 1 / 220 / 60	1 / 220-240 / 50 1 / 220 / 60	1 / 220-240 / 50 1 / 220 / 60	
	Airflow Rate	Cooling	H / M / L	m ³ / min	6.7 / 5.9 / 4.8	6.7 / 5.9 / 4.8	7.5 / 5.9 / 4.8	8.7 / 6.7 / 5.9
Heating		H / M / L	m ³ / min	6.7 / 5.9 / 4.8	6.7 / 5.9 / 4.8	7.5 / 5.9 / 4.8	8.7 / 6.7 / 5.9	
Sound Pressure			H / M / L	dB(A)	37 / 34 / 28	37 / 34 / 28	39 / 34 / 28	42 / 37 / 31
Sound Power			H / M / L	dB(A)	53 / 50 / 44	53 / 50 / 44	56 / 50 / 44	58 / 53 / 50
Dimensions	Body	W x H x D		mm	700 x 600 x 210	700 x 600 x 210	700 x 600 x 210	700 x 600 x 210
Net Weight			kg	14.0	14.0	14.0	14.0	
	Piping Connection	Liquid			mm	6,35	6,35	6,35
Gas				mm	12,7	12,7	12,7	
Drain		LD		mm	12,2	12,2	12,2	

* This product contains Fluorinated Greenhouse Gases: (R410A)

1) Nom. Performance tested under EN14511

2) Rated. Max power input allowed for fan motor

Note: 1. Capacities are based on the following conditions

- Cooling: Indoor temp. 27°C (80.6°F) DB / 19°C (66.2°F) WB, Outdoor temp. 35°C (95°F) DB / 24°C (75.2°F) WB, Interconnecting piping length 7.5m, Level difference of zero

- Heating: Indoor temp. 20°C (68°F) DB / 15°C (59°F) WB, Outdoor temp. 7°C (44.6°F) DB / 6°C (42.8°F) WB, Interconnecting piping length 7.5m, Level difference of zero

2. Due to our policy of innovation some specifications may be changed without notification

3.LD - Internal Diameter

Accessories

Model	ARNU07G A4	ARNU09G A4	ARNU12G A4	ARNU15G A4
Dry Contact	Simple (1 Contact point with case)			PDRYCB000
	2 Contact point			PDRYCB400
	For Thermostat (On-Off / Mode / Fan speed)			PDRYCB300
	Modbus Communication			PDRYCB500
EEV Kit for MULTI V indoor				PRGK024A0

Wired Remote Controller

Premium	Standard II		Simple	Simple for Hotel	Wireless Remote Controller
PREMTA000 PREMTA000A PREMTA000B	PREMTB001 (White)	PREMTB01 (Black)	PQRVCVLOQ (Black) PQRVCVLOQW (White)	PQRCHCAOQ (Black) PQRCHCAOQW (White)	PQWRHQ0FDB