



Fresh Air Intake

It's the ideal solution for schools, hospitals, offices and all the buildings that require fresh air ventilation (in limited quantity), without any further exclusive system, where there is insufficient outdoor space to install a large air handling unit or whenever zoning of a building with different independent small tenant areas are clearly defined.

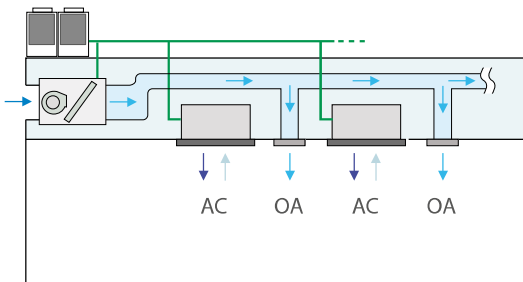
Pre-heat, pre-cool functions (discharge temperature setting range from 16°C to 27°C).

Standard and High-performance filters available as an option.

Compatible with DX coil.

External static pressure available up to 230 Pa.

MMD-AP*HFE**



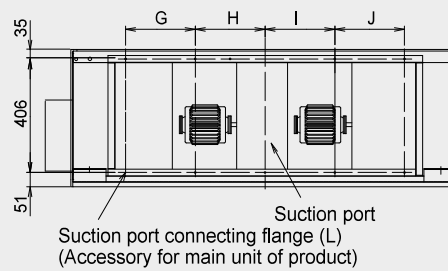
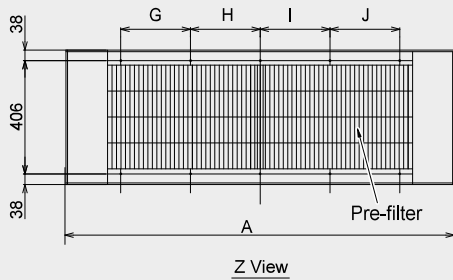
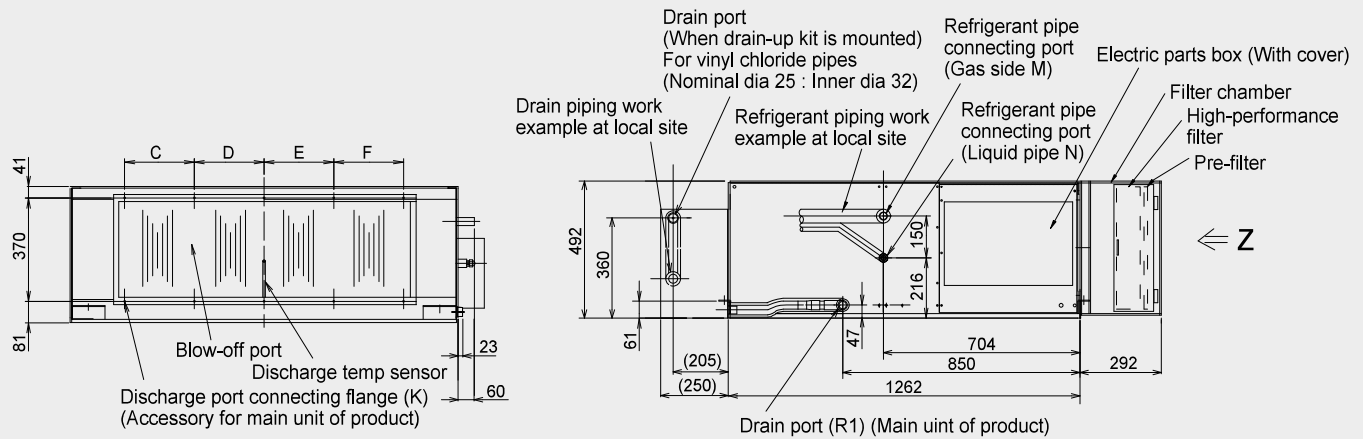
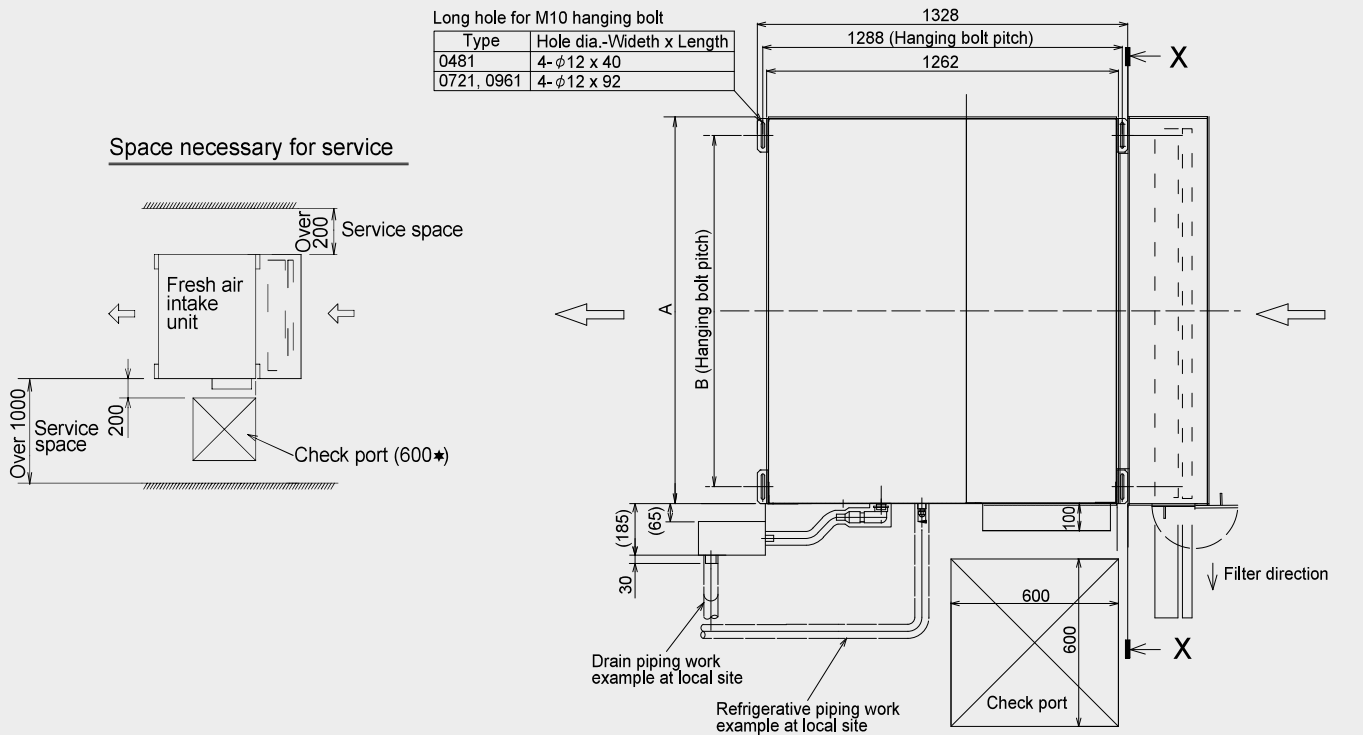
Working principle

A fan takes the outside air, pass it through the filter, the coil and then enter in the ductwork to be distributed to different parts of the building.

Technical specifications

Indoor unit	MMD-	AP0481HFE	AP0721HFE	AP0961HFE
Cooling capacity	kW	14,0	22,4	28,0
Heating capacity	kW	8,9	13,9	17,4
Power input	kW	0,28	0,45	0,52
Running current	A	1,43	2,52	2,73
Starting current	A	3,5	7,0	7,0
Air Flow (h)	m ³ /h	1080	1680	2100
Sound pressure level (h/m/l)	dB(A)	45/43/41	46/45/44	46/45/44
Sound power level (h/m/l)	dB(A)	60/58/56	61/60/59	61/60/59
Dimensions (HxWxD)	mm	492x892x1262	492x1392x1262	492x1392x1262
Weight	kg	93	144	144
Connecting pipe, gas	in	5/8"	7/8"	7/8"
Connecting pipe, liquid	in	3/8"	1/2"	1/2"
Drain port diameter	mm	25	25	25
Operating range - Cooling	°C	5÷43	5÷43	5÷43
Operating range - Heating	°C	-5÷43	-5÷43	-5÷43
Power supply	V-ph-Hz	220/240-1-50		
Air Filter			Option or field supply	
External static pressure (l/m/h)	Pa	170-210-230 (Factory setting)/210	140-165-180 (Factory setting)/165	160-190-205 (Factory setting)/190

MMD-AP***HFE



AP0961HFE	1392	1260	250	250	250	250	250	250	250	250	10-M6	10-M6	φ22.2 brazing	φ12.7 flare
AP0721HFE	1392	1260	250	250	250	250	250	250	250	250	10-M6	10-M6	φ22.2 brazing	φ12.7 flare
AP0481HFE	892	810	215	107.5	107.5	215	—	250	250	—	8-M6	6-M6	φ15.9 flare	φ9.5 flare
Model MMD-	A	B	C	D	E	F	G	H	I	J	K	L	M	N